

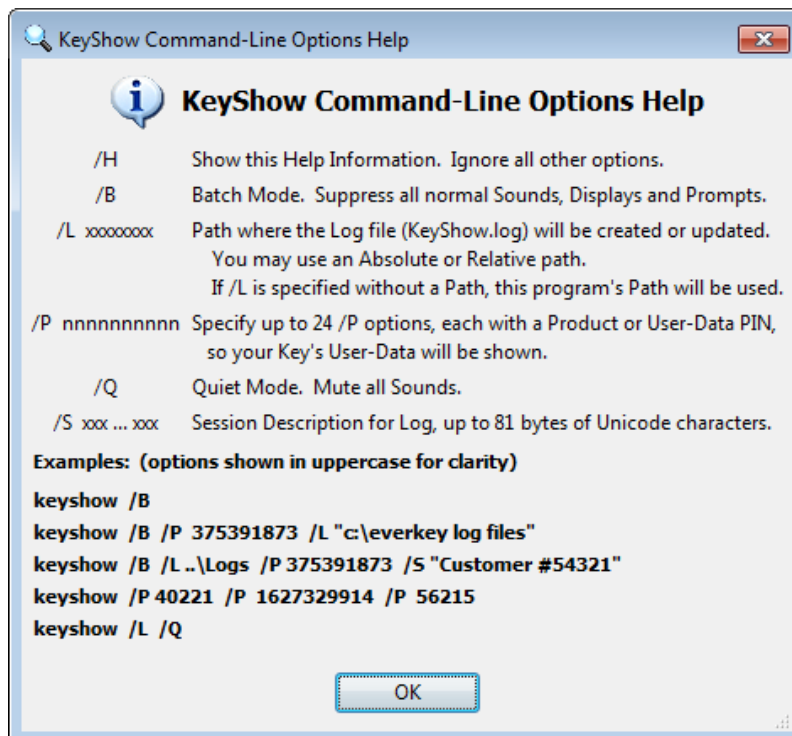
## KeyShow Command-Line Options Overview

**KeyShow** supports “**Command-Line Options**” that allow you to automate certain features. For example, you might want to record all **KeyShow** activity to a Log file for later review. Or you might want to use **KeyShow** to completely automate your Key testing to improve quality control. These Command-Line Options can be added to the Windows shortcut or specified from a parent program or batch file.

The most popular use of the **KeyShow** Command-Line Options is to automate the Key testing process. A parent program or batch file can use the “**/B**” option to run **KeyShow** in “**Batch Mode**” where all normal Sounds, Displays and Prompts are suppressed. **KeyShow** will set a return code which allows the parent program or batch file to check for success. In addition, all program activity can be recorded to a Log file for later review.

Another useful Command-Line Option is “**/L**” for **Logging**. Adding this option to the Windows shortcut will cause all **KeyShow** activity to be logged to a text file, named “**KeyShow.log**”. Each Logged activity is stamped with the local Date and Time so you have a record of exactly what was done and when it was done.

When running **KeyShow.exe** in Batch Mode, the parent program or batch file can check to determine if the **KeyShow** operation completed successfully. If running from a Windows Batch file, you would check ERRORLEVEL. If running from a parent program, you would check the completion code of the executed program (**KeyBuild**). If the value is set to zero (0), the operation completed successfully. If not zero, then the value is set to the last three (3) digits of the Error Code. For example, if **KeyShow** failed with Error 6043 because no Keys were found, then the value would be set to 43. If you specify an unsupported Command-Line option, the value will be set to 9.



KeyShow Command-Line Options Help Screen

## KeyShow Command-Line Options Details

The following table shows all the command-line options for **KeyShow.exe**. All options can be in lowercase or uppercase. Uppercase is show for clarity.

<b>/H</b>	Display <b>Help</b> . This option displays all command-line options and examples showing how to use them. <b>When this option is specified, all other command-line options are ignored.</b>
<b>/B</b>	<b>Batch Mode.</b> This option tells <b>KeyShow</b> to run without Sounds, Displays or User I/P Prompts. If you wish to record all program activity to the Log file (" <b>KeyShow.log</b> "), then specify the <b>/L</b> option. <b>KeyShow Batch Mode</b> is used to automate the process of testing Keys after they are built by <b>KeyBuild</b> .
<b>/L xxxxxxxx</b>	When this option is used, <b>KeyShow</b> records all program activity to a <b>Log</b> file named " <b>KeyShow.log</b> ". The <b>/L</b> option allows you to specify the Path (xxxxxxx) where the <b>Log</b> file will be created or updated. If the Path specified already contains a <b>Log</b> file, the new information will be appended to the end of the file. You may specify an Absolute Path or Relative Path. A Relative Path will be based on the current Path of the <b>KeyShow</b> program. If using a Path with embedded spaces, you must use double-quotes around the Path and not end the Path with a "\". If the <b>/L</b> option is specified without a Path, the Path of the <b>KeyShow</b> program will be used.
<b>/P nnnnnnnnnn</b>	You can specify up to 24 " <b>/P</b> " options, each with a different Product or User-Data <b>PIN</b> (nnnnnnnnnn), so your Key's User-Data will be shown. For example: <b>keyshow /p 123456789 &lt;Enter&gt;</b> <b>keyshow /p 12345 /p 54321 /p 123456789 &lt;Enter&gt;</b> The Product and User-Data <b>PINs</b> are displayed on the <b>KeyBuild</b> "Build Keys" panel.
<b>/Q</b>	<b>Quiet Mode.</b> Mute all Sounds.
<b>/S xxx ... xxx</b>	<b>Session-ID</b> up to 81 bytes of Unicode characters. Used to quickly identify this work Session in the Log file (" <b>KeyShow.log</b> ").
<b>Examples of KeyShow Command-Line Options</b>	(Command-Line Options shown in uppercase for clarity) <b>keyshow /B</b> <b>keyshow /B /P 375391873 /L "c:\everkey log files"</b> <b>keyshow /B /L ..\Logs /P 375391873 /S "Customer #54321"</b> <b>keyshow /P 40221 /P 1627329914 /P 56215</b> <b>keyshow /L /Q</b>